

 iL BRILLE

iL BRILLE FACIAL SOAP

Facial cleansing revitalize your skin

(100g/ Fragrance free / Flaked soap)

Luxurious black colored soap, blackened with insoluble minerals.
The rich lather and fine creamy foam moisturize the skin while thoroughly removing dirt and grime.



iL BRILLE FACIAL SOAP

Facial cleansing revitalize your skin

~ 3 Tips of Facial Soap ~

Platinum (platinum nanocolloid)

Platinum has a potential of -40 mv, which is just the average value of the human body's internal potential, and has the effect of normalizing the ion balance of the skin and body. Instead of having cellular tissue absorb nutrients, as is conventionally the case, platinum reduces the amount of nutrients to healthy cells so that the cellular tissue cells can take in nutrients on their own. Platinum's redox and catalytic effects lead to beautiful skin that ages beautifully.

Human Oligo Peptide-1

h-EGF (human epidermal growth factor) is a polypeptide of 53 amino acids. h-EGF is a cell-regenerating factor that acts on cells on the surface of the skin to stimulate new cell production, blood flow, and collagen accumulation by repeatedly dividing and aggregating cells. After the age of 25, the amount of h-EGF in the skin gradually decreases and the rate of cell division slows, leading to wrinkles.

Plant Extracted Elements

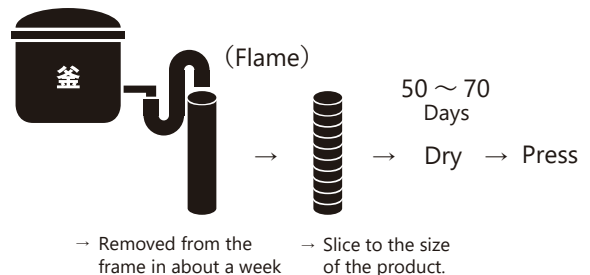
Plant-extracted elements are minerals extracted from the 30 or so wild plants listed below, including wild grasses, sea algae, and tree leaves. The human body needs minerals, and plant-derived elements maintain the mineral balance shared by the human body. They play a major role in improving skin immunity and cellular activity.

< Plants used >

Kelp, wakame seaweed, hijiki, pine needles, loquat leaves, cypress leaves, cedar leaves, ginkgo leaves, mulberry leaves, bamboo, kumazasa bamboo, kudzu leaves, Japanese knotweed sprouts, dokudami, mugwort, strawberries, Japanese mugwort, water shield, horsetail, ebizuru, nigeri, watercress, daylily, plantain lily, plantain lily, dandelion, amadokoro Kakidoshi, Chinese matrimony vine

< 粹練り法(the frame kneading method) >

In the frame kneading method, raw materials are prepared in a boiler, heated, and the neat soap, the soap base, is extracted from the boiler, poured into a frame, and dried. The frame kneading method is a traditional method in which glycerin is poured into a frame and then dried. In the frame kneading method, glycerin is left over. This glycerin is a substance that is indispensable in the manufacture of cosmetics. It is an indispensable substance in the manufacture of cosmetics and serves as a moisturizer. Flame-kneaded soap contains this moisturizer. Because of the presence of this moisturizing agent, the skin does not feel tight after washing. The soap is made by iL BRILLE. iL BRILLE Facial Soaps are handmade using a special technique that combines the traditional. It takes about three months to complete the handmade process.



< Features >

Luxurious black colored soap, blackened with insoluble minerals, rich in lather and fine creamy lather that moisturizes and cleanses the skin. The rich lather and fine, creamy foam moisturize the skin while thoroughly removing grime and can be used as a "double face wash" to remove makeup and dirt such as sweat and oil in a single wash, leaving the face feeling moist and clean without feeling tight.

< Directions >

Lather thoroughly with palm of hand (or lathering net) and wash by stroking the skin without rubbing. After washing, rinse thoroughly with warm water.

< How to storage >

After using the soap, drain off the water and store the soap in a dry place.

 iL BRILLE

iL BRILLE ESSENCE

Gives freshness and glow to the skin

(Essence 30ml)

Paraben-free / Alcohol-free / No synthetic surfactants / Colorant-free, fragrance-free, mineral oil-free

Contains mandarin orange peel extract to clarify the skin.
Skin feels refreshed yet moisturized. Skin feels plump and smooth the next day.



iL BRILLE ESSENCE

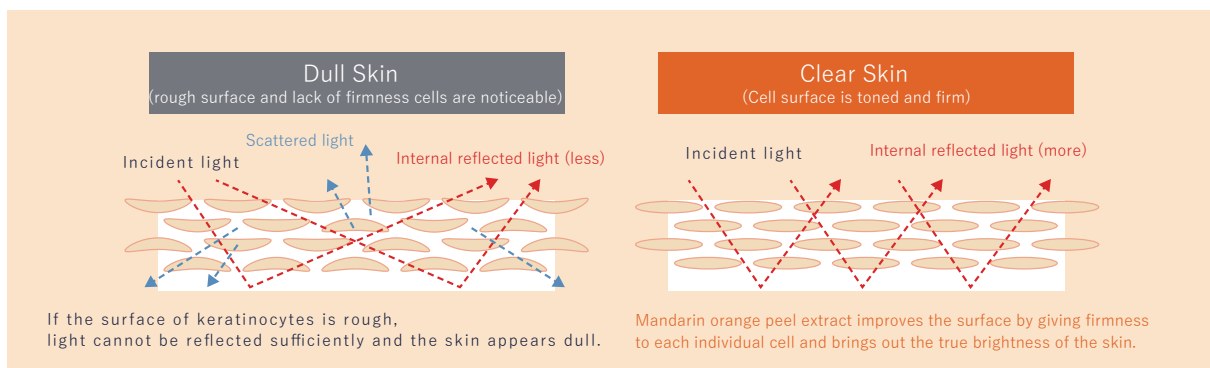
Gives freshness and glow to the skin.

The power of a serum containing mandarin orange peel extract. We focused on mandarin orange peel! The beauty energy of the mandarin orange peel is infused into the AG Essence. The use of the line also approaches the skin's mechanism. It works on skin problems such as dryness, dullness, and open pores, and leads to glowing and smooth skin. In addition, it penetrates into the keratinized skin layer to reduce the appearance of fine lines and wrinkles caused by dryness. The translucent, thick texture of the cream melts into the skin the moment it is applied, leaving it smooth and non-greasy. The skin becomes smoother and smoother without stickiness. Mandarin orange peel extract gives youthful radiance and transparency, while yuzu fruit extract beautifully regulates skin texture and gives skin a refined glow for flawless beauty.

<Directions>

After toner, take 1-2 pumps and apply to entire face.

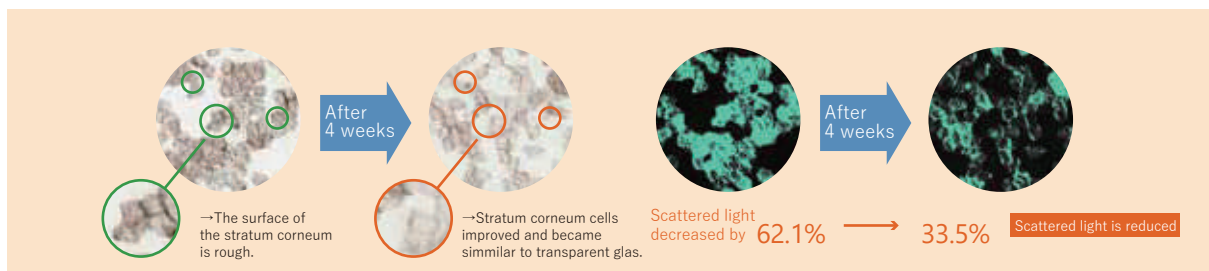
Contains mandarin orange peel extract



The stratum corneum, the outermost layer of the skin, is the pathway for light that determines the brightness of the skin. If the surface of the horny cells that form the stratum corneum is disrupted, the skin appears dull, as if seen through polished glass. Mandarin orange peel extract" gives the skin a sense of depth and transparency by firming the surface of each stratum corneum cell and increasing the amount of internally reflected light (light recognized as skin color) from deep within the skin.

Improvement of the skin

Woman in their 30s using essence containing mandarin orange peel extract



A prototype essence containing mandarin orange peel extract was applied to the cheeks of monitors twice a day for 4 weeks, and stratum corneum samples were photographed using the monitored field illumination method. Scattered light was reduced and light transmittance was improved by the application of mandarin orange peel extract. Image analysis also showed a decrease in scattered light. Therefore, it can be expected that mandarin orange peel extract improves skin transparency.

 iL BRILLE

iL BRILLE LOTION

The key to ageing is skin moisture

(lotion200ml)

Luxurious ingredients are absorbed into the skin as if absorbed by the skin,
delivering rich moisture deep into the skin.



iL BRILLE LOTION

Instantaneous moisturizing and hyaluronic acid W moisturizing effects
lead to brighter skin

Luxurious ingredients are absorbed into the skin and deliver rich moisture deep into the skin (stratum corneum). A new substance made from "Suizenji laver (polysaccharide of Suizenji laver)," which grows only in limited spring water in Kyushu, moisturizes the skin from the inside (stratum corneum) and delivers a fresh and fresh texture with sustained moisture retention to the deepest layers of the skin (stratum corneum). Contains sodium hyaluronate (moisture retention) as an instant moisturizer, leading to brighter skin (visual effect) with W moisturizing. Contains Hibiscus syriacus seed extract and horse chestnut seed extract as ingredients for anti-aging care (age-appropriate care) to improve skin texture and provide dense, silky moisture, leading to beauty from the foundation up.

Directions

- (1) Take an appropriate amount of the product in the palm of your hand and distribute evenly over the entire skin.
- (2) Carefully blend around the eyes and mouth, which are prone to dryness.
- (3) Gently wrap your face with the palm of your hand and blend in slowly.

Polysaccharide of Glycyrrhiza japonica

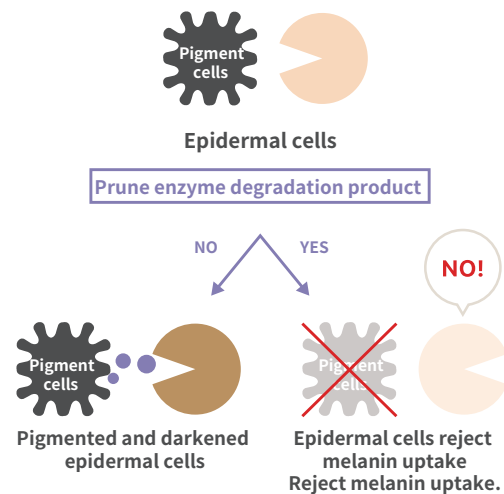


Kumamoto



This is a new substance produced from "Suizen Nori," which grows only in limited spring water in Kyushu. It is the substance with the highest water absorption capacity in the natural world. (It retains moisture five times better than hyaluronic acid.) An expensive ingredient, costing 2 million yen/kg, "Suizenji Nori" was discovered in a pond at Suizenji Seishuen in Kumamoto City. It was so rare that it was designated as an endangered species, but nowadays it is cultivated in Fukuoka and Kumamoto prefectures with delicious water, blessed environment, and human power.

It is one of the largest natural substances in terms of molecular weight. The high molecular weight of the polysaccharide has a high water-holding capacity, which is five times greater than that of hyaluronic acid. A film of polysaccharide of Glycyrrhiza sativa is formed on the skin, which is also highly moisturizing.



Whitening effect of prune enzyme degradation products

Conventional whitening agents whiten skin by inhibiting melanin synthesis in pigment cells. Prune enzyme degradation products inhibit skin darkening by suppressing the "appetite" (phagocytosis) of epidermal cells for melanin.

Inhibits melanin uptake/Inhibits pigmentation
Reduces melanin in keratinized skin

 iL BRILLE

iL BRILLE MiLK

Perfect Skin Beauty Emulsion

(milky lotion 120ml) Paraben-free / Alcohol-free

An expert milky lotion that controls shine and gives skin smoothness in pursuit of perfect skin beauty. Its light and silky texture adheres comfortably to the skin without leaving a sticky residue.

Leaves skin smooth, supple, and matte.



iL BRILLE MILK

Perfect Skin Beauty Emulsion

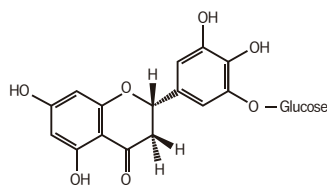
Skin can become unbalanced due to dryness and external environment. A comfortable technique using only simple and carefully selected ingredients. The texture contains *¹vitamin A to make skin lively and elastic, and *²mullein root extract to prevent rough skin. *³aging skin needs a moisturizing anti-aging care to achieve healthy skin. This highly*⁴ effective emulsion for beautiful skin addresses the factors that*⁵ hinder beautiful skin.

*¹The highly effective emulsion works to address the complex skin problems of mature women, such as *²dryness, fine lines and wrinkles, loss of elasticity, pores, and texture disorder, even on a bare skin. *³With a refreshing texture, it improves *⁴skin texture with each use, leading to *⁵brighter, smoother, and more refined skin.

<Directions>

Apply 2-3 pumps to the entire face in the morning or evening after toner. When using in the morning, be sure to apply sunscreen.

absorance essence



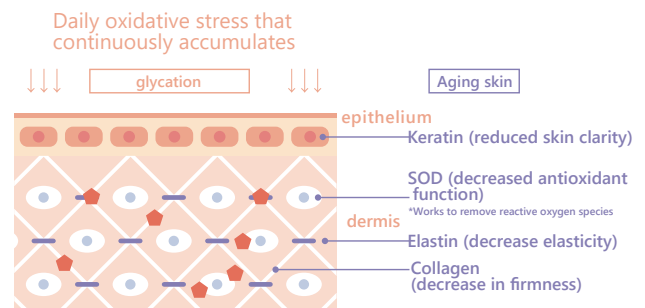
Functional ingredient : Plantagoside



absorance

Plantagoside, an active ingredient, inhibits glycation (glycation) of various proteins and is expected to prevent and improve skin aging.

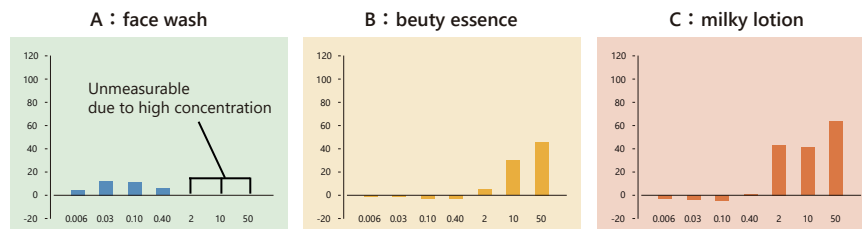
Sugars, which are abundant in our body, are activated by oxidative stress and bind to proteins, altering them and reducing their function. This glycation of proteins also occurs in the skin. The glycation of epidermal keratin which is thought to impair skin transparency, and the glycation of dermal collagen and other skin structural proteins leads to aging phenomena such as reduced flexibility and elasticity of the skin. In addition, glycation of the antioxidant enzyme SOD reduces the antioxidant function of the skin, leading to a vicious cycle that further accelerates skin aging. Inhibition of protein glycation is very important in the prevention of skin aging.



Doshisha University Analysis Results

Y-axis: inhibition (%) X-axis: reaction concentration (%) Mean ± standard deviation, n=3
Saccharification reaction was performed and fluorescent AGEs were measured.

The results show the inhibition rate of AGEs formation at the sample concentration in the reaction solution.



AGEs formation inhibitory effect was observed in A (face wash), B (serum), and C (milk); measurement of A at high concentrations was not possible due to the high surfactant content. A, B, and C may have been caused by the following ingredients in the formulation. Hibiscus syriacus seed extract, horse chestnut seed extract, Roman chamomilla flower extract, soybean seed extract, amino acids (alanine, threonine, proline, arginine, glycine, etc.), and amino acids (alanine, threonine, proline, arginine, arginine, glycine, etc.).

 iL BRILLE

iL BRILLE PACK

For refined and glowing skin

(Pack 150g)

This pack protects the skin from external stresses such as dryness caused by ultraviolet rays, etc., and addresses signs of concern. This 10-minute serum pack leads the skin to a youthful radiance.



iL BRILLE PACK

A 10-minute serum pack that addresses your skin problems

Protects the skin from external stresses such as dryness caused by ultraviolet rays, etc., and approaches your skin problems. This 10-minute serum pack leads the skin to a youthful radiance. It deeply moisturizes even the stratum corneum and intensively treats skin damage caused by dryness and other factors in 10 minutes. It gives blissful relaxation to the skin, and leads to a plump and resilient skin with luxurious moisture and shine. The soft, rich, creamy texture of the pack leaves skin with a sublime radiance. After the pack, it can be rinsed off in the bathtub and used as a bath salts for body care.

<Directions>

(1) Indoor use:

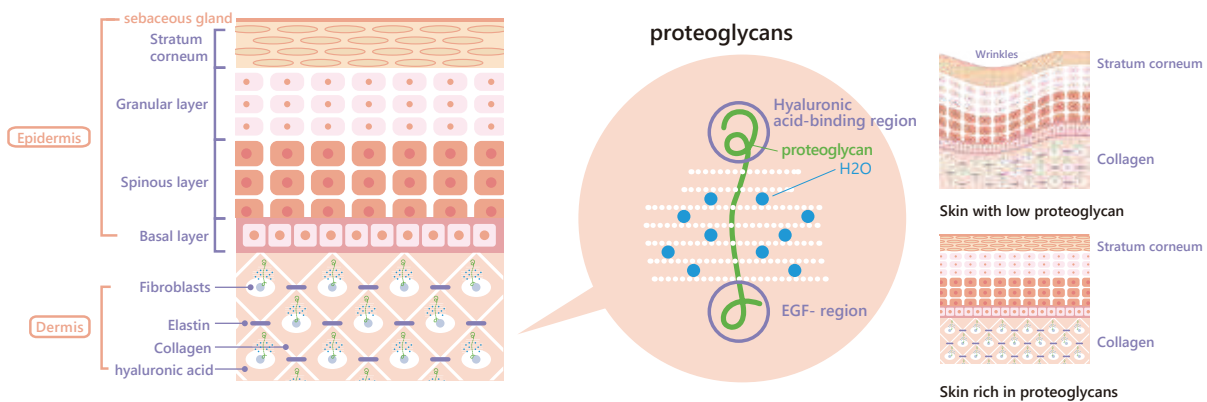
1. After washing face and applying toner, apply a slightly thicker layer to the entire face, avoiding the eye and mouth area, until the color of the skin is not visible.
2. After leaving on for 5 to 10 minutes, gently wipe off with a cotton pad or tissue and rinse with lukewarm water.
3. After rinsing, follow your normal skincare regimen.

(2) How to use in the bathroom

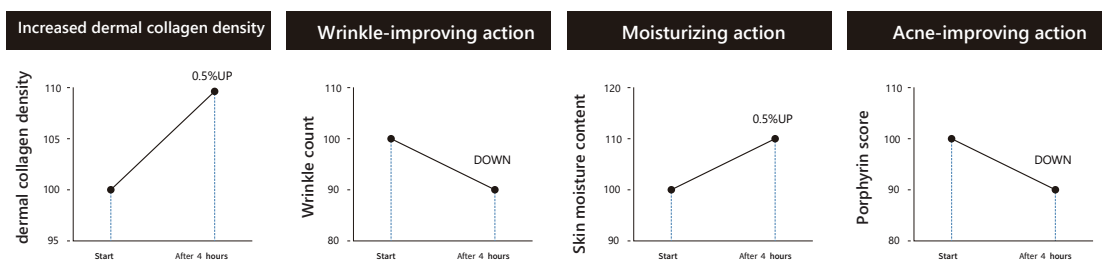
1. After washing face, get into bath and apply a slightly thicker layer to entire face, avoiding the eye and mouth area, until skin color is not visible.
2. Leave on for 5 to 10 minutes, then rinse off in the bathtub and use as a bath additive.
3. Soak in the bathtub for about 10 minutes and rinse off. Recommended to pack twice a week.

What are proteoglycans?

Proteoglycans are glycoproteins consisting of a core protein to which glycosaminoglycan chains such as chondroitin sulfate and keratan sulfate are covalently attached.



EGF is called "epidermal growth factor" and plays an important role in regulating cell growth and proliferation. It has been found that EGF decreases with age in humans, and this is thought to cause a decline in metabolism and cellular regeneration capacity. Research conducted by Hiroasaki University has confirmed that salmon nasal cartilage-derived proteoglycans have EGF-like effects and that they are aggregating with a structure in the EGF-like region.



 iL BRILLE

iLBRILLE WASH

Facial cleanser that leads to more unwavering beauty

(Facial cleanser 160ml) Paraben-free / Alcohol-free

Contains clay (sea silt), a blessing of nature.
Dense lather cleanses the skin and rinses away dead skin cells that cause dullness.



iL BRILLE WASH

Luxurious face wash containing nature's blessing clay (sea silt)

Cleanses and conditions the skin on a daily basis,
while washing away excess sebum and unnecessary keratin, leading to a clean and bright skin.
Its fresh and sweet yogurt-like fragrance is loved by everyone.



<Directions>

- 1) Wet your face with lukewarm water in advance, take an appropriate amount (about 2.5cm) in your palm, add a little lukewarm water, and lather. Use a lather net to create a smoother soap.
- 2) After gently lathering your face with the foam, rinse well with lukewarm water.

Mineral Properties

	海シルト	溶岩クレイ
Si	59	64.6
Al	19	2.7
Fe	6.5	1.2
Mg	3.2	30.6
K	3.2	0.5
Ca	2.8	1
Na	1.9	0.1
Ti	0.9	0.1

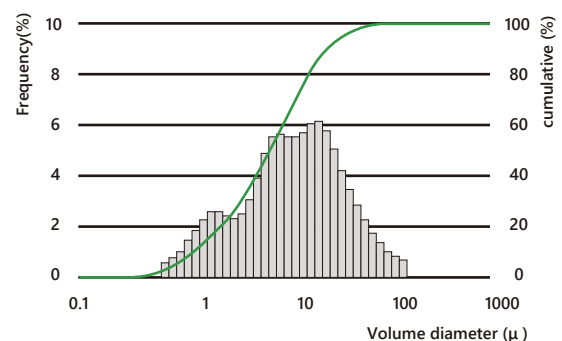
*Comparison of mineral composition

Material: Clayey, mineral-rich marl

Composition: Mixture of mica, smectite, montmorillonite, and kaolinite. Contains primitive types of materials and is rich in calcium carbonate and minerals. Negative electric charge.

Dispersibility: More than 50% of the particles are less than 7 microns, making it very fine-grained. When it absorbs water, it becomes soft clay, and with a large amount of water, it becomes muddy water. Medium to weakly alkaline.

Particle size distribution chart of sea silt wet products



Wet type (adopted manufacturing method), the average particle size of wet type is very fine, approximately 7μm. Particle size distribution is sharp and uniform. The product is smooth and moist to the touch.



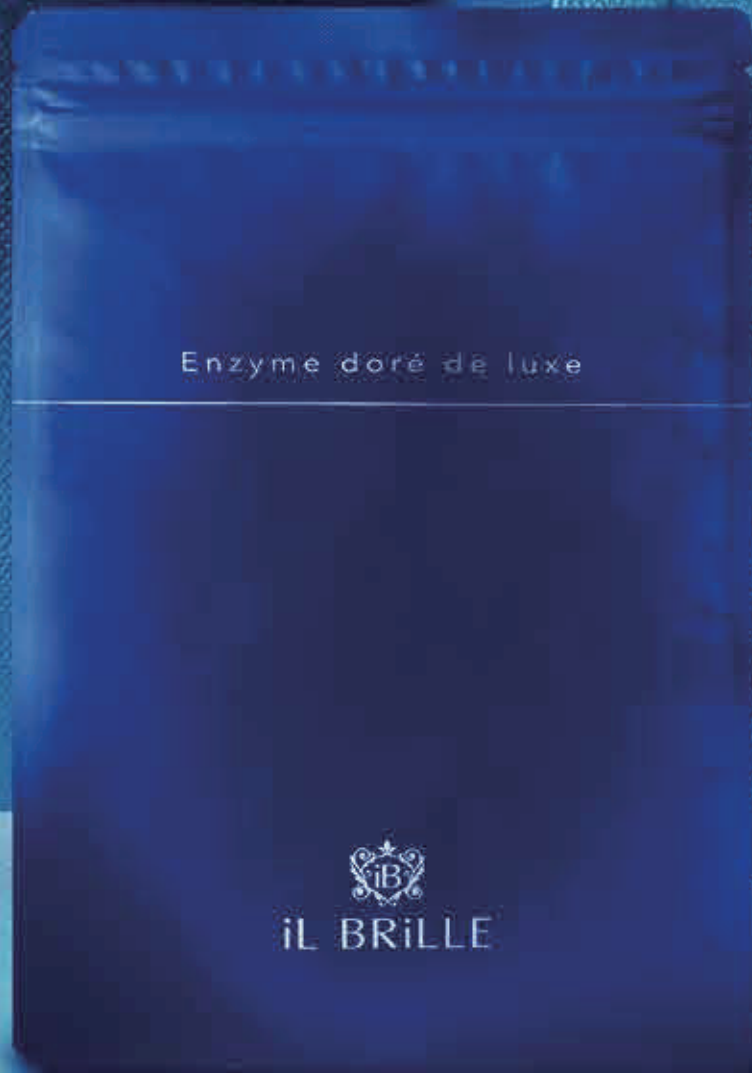
IL BRILLE

Enzyme doré de luxe

Luxurious gold-colored enzymes
for inner beauty

(Enzymes 75g [2.5g x 30 packets])

This product uses plant fermentation extracts (enzymes) produced by applying the sake brewing process cultivated by a long-established sake brewing company over many years. Fermentation and maturation takes one to two years to produce a variety of nutrients, including amino acids.



Enzyme doré de luxe

Luxurious gold-colored enzymes for inner beauty

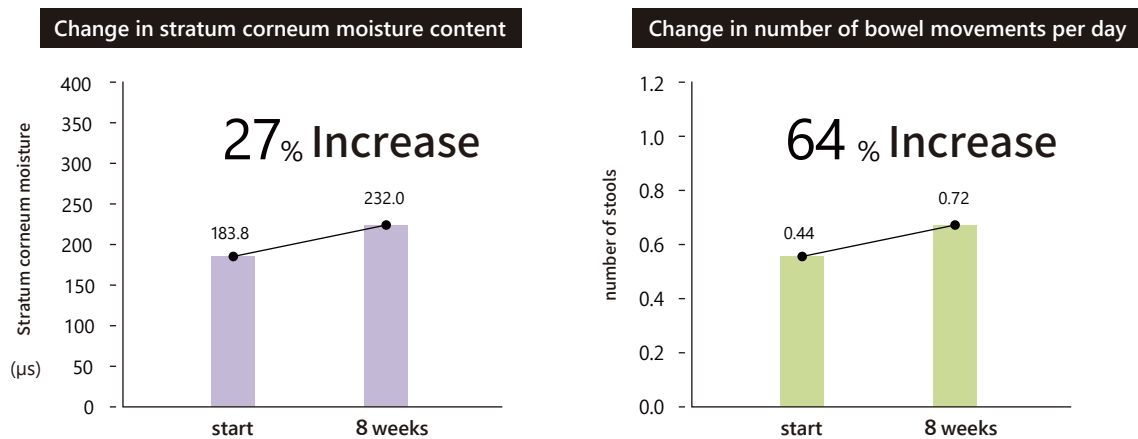
Uses plant fermentation extracts (enzymes) produced by applying the sake brewing process cultivated by a long-established sake brewing company over many years. Fermentation and maturation, which takes one to two years, produces a variety of nutrients such as amino acids through the action of enzymes produced by yeast, lactic acid bacteria, and acetic acid bacteria. Plant fermented extracts are made from more than 100 carefully selected vegetables, fruits, wild plants, grains, seaweeds, and brown sugar, and fermented and matured by "Kuratsuki Kobokin," a yeast that lives in sake breweries. This plant fermentation extract assists internal fermentation. It is known that at least 100 trillion bacteria such as lactic acid bacteria and bifidobacteria live in the body, and the phenomenon in which good bacteria work to produce ingredients that are good for the body is generally called "internal fermentation. It can be said that smoothly preparing the environment for "internal fermentation" is a shortcut to good health. In addition, by becoming food for good bacteria that work well for the body, they assist in internal fermentation.

<Directions>
Take 1 to 2 packets per day.

Verification of the effects of plant fermented extracts on bowel movements and skin

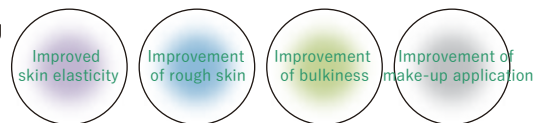
Dose, method, and duration of intake

2.5 g twice a day, after breakfast and dinner. Intake period was 8 weeks.



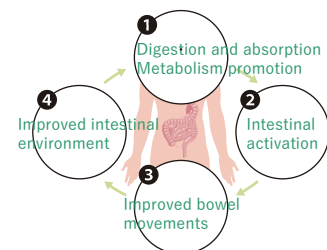
Experiential effects of ingestion

In the VAS questionnaire survey on the experience of taking the product, there was a significant improvement in the "rough skin," "cracked skin," "elasticity of skin," and "smoothness of makeup" at 8 weeks compared to 0 weeks.



Consideration of Trial Monitoring Results

Based on the results of the trial monitoring, it is assumed that the intake of the plant fermented extract promoted digestion, absorption, and metabolism in the body and activated the workings of the intestines, resulting in improved bowel movements and softening of stools. The increase in water content in the stratum corneum of the skin and the experience of the skin beautifying effect are thought to be due to the improvement of bowel movements, which improved the intestinal environment and reduced the accumulation of harmful substances in the intestines, thereby eliminating problems such as rough skin and improving the skin condition.



 iL BRILLE

iL BRILLE CREAM

Moisturizes the skin's horny layer
for radiant, bouncy skin

(Cream 30g)

keeps beauty energy into the skin to nurture radiant skin.



iL BRILLE CREAM

Moisturizes the skin's horny layer for radiant, bouncy skin

~Finishing touch for basic cosmetics~

The velvety texture comfortably envelops the skin and replenishes moisture and oil to the skin's horny layer, preventing moisture from evaporating. Protects the skin from dryness and other external stimuli and supports the skin's natural barrier function. Moisturizes the skin, leaving it smooth, plump, resilient, and luxuriously radiant.

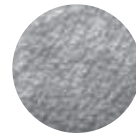
Directions

- 1, Take an appropriate amount on your palm and distribute evenly over the entire face.
- 2, For the areas around the eyes and mouth, which tend to be dry, blend carefully.
- 3, Gently wrap your entire palm around your face and gently press down to blend.

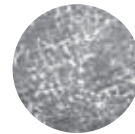
Cherry leaf extract Improving rough skin for traditional Japanese beauty



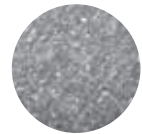
Actions of deterioration and improvement of skin surface shape by SDS treatment. The less scale, the better the skin roughness. The less scaling is seen in the bright white area, the better the skin roughness is.



No SDS treatment



SDS treatment control without cherry leaf extract



SDS treatment with cherry leaf extract

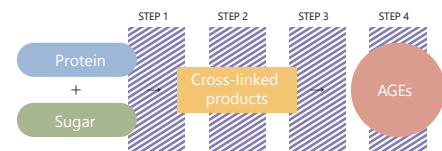
Plum Fruit Extract

for Bright and Bouncy Skin by Reducing Glycation



What is glycation, which accelerates skin aging? Glycation is a reaction in which sugar and proteins combine to form brownish compounds called AGEs (end-penetrating organisms). As AGEs accumulate in the skin with aging, it is known to cause yellowing, loss of elasticity, wrinkles, and sagging of the skin.

Four Antioxidant Effects of Ume Fruit Extract



- STEP 1: Inhibition of cross-link formation between sugar and protein
- STEP 2: Promotion of cross-link cleavage
- STEP 3: Inhibition of AGEs formation
- STEP 4: Acceleration of AGEs degradation

CICA (Camellia sinensis leaf/stem extract) protects skin from signs of aging



Camellia sinensis is also known by its crude drug name, Sekisetsu-so. Its leaf/stem extract promotes type I collagen production and inhibits melanin production to treat wrinkles, spots, sagging skin, and other symptoms of skin aging. It also helps to improve the skin's foundation and prevent rough skin by scavenging active oxygen species, inhibiting stratum corneum protein carbonylation, and inhibiting the release of hexosaminidase (antioxidant/anti-inflammatory).